

Unterstützt durch technische Ansprechpartner,  
unabhängige Tests und Prüflabore

Source Code + Application Guide






## Advantages of the PROFIsafe Standard

### Integration of Safety and Standard Communication on One Channel (Black Channel Principle)

- > User Workshop .....  Free
- > Specification for PROFIsafe .....  Free for Members
- > Test Specification for PROFIsafe .....  Free for Members
- > Technical Contacts in Competence Centers .....  Free
- > Testlab for Certification Support .....  Product Certification
- > Implementation Guide .....  Free for Members
- > Source Code of PROFIsafe Device-Driver .....  Fee-Based
- > Certified Designer / Refresher Course .....  Fee-Based

## Benefits from Multiple Profiles

-  > Safety Integrated into Machines and Systems
- > Reusability of Safety Concepts
- > Fail-Safe Communication over Industrial WLAN
-  > Standardized Application Interface for Motion Control and Encoder
- > Simple Replacement of Devices
- > Consistent Diagnosis
-  > Control and Measurement of Energy Consumption
- > Coordinated Switch-On and Switch-Off of Entire System Parts
- > No External Hardwired Systems Required

More Information about PROFIsafe:  
[www.profibus.com/PROFIsafeMarketing](http://www.profibus.com/PROFIsafeMarketing)



PROFIBUS Nutzerorganisation e.V. (PNO) PROFIBUS  
& PROFINET International (PI)  
Ohiostraße 8 · 76149 Karlsruhe · Germany  
Phone: +49 721 986 197 0  
E-Mail: [info@profibus.com](mailto:info@profibus.com)  
[www.profibus.com](http://www.profibus.com) · [www.profinet.com](http://www.profinet.com)

© Copyright by P103/18 - all rights reserved - 4.142

## Functional Safety with Vision



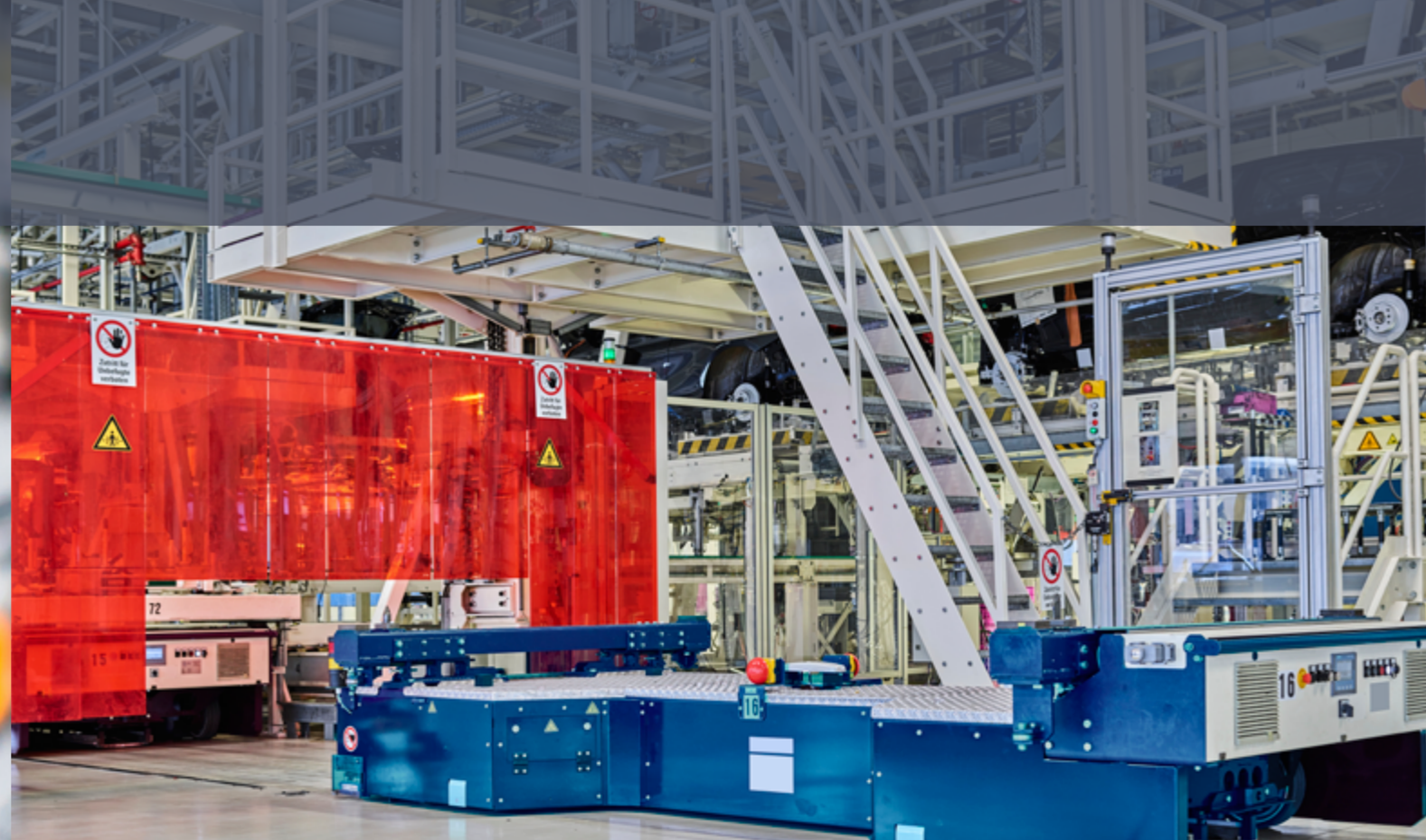
**PROFIsafe**  
Safe • Integrated • Open

# Standardized and Internationally Accepted

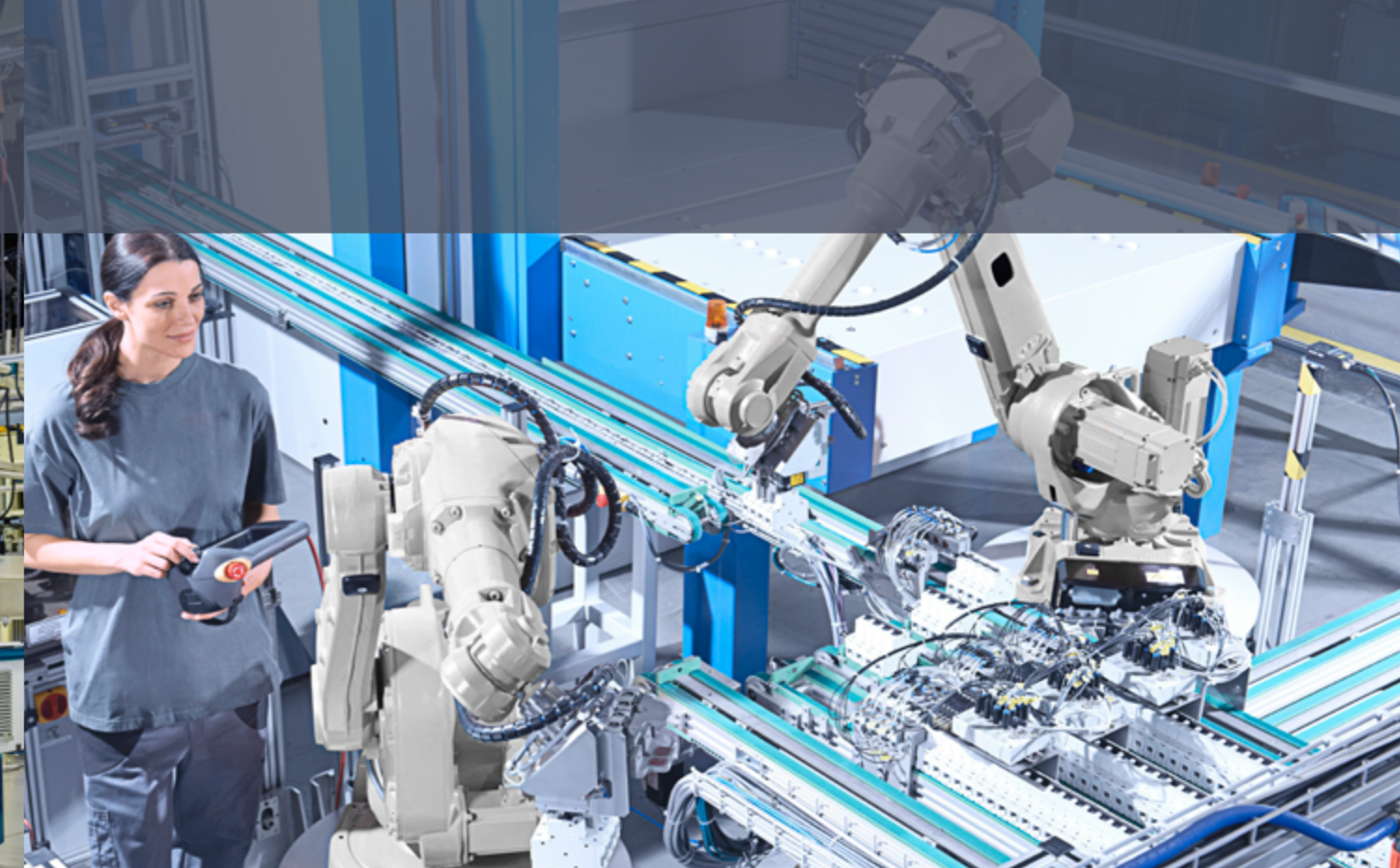
PROFIsafe – The Proven Flexible Technology for Functional Safety



**Interoperable and Manufacturer-Independent**



**Degrees of Freedom for Every Application**



**Flexible Collaboration**

## The Solution for All Industries

Meets International Standards

- › PROFIsafe Is TÜV-Tested and Meets the International IEC 61784-3-3 Standard
- › Covers the Entire Communication Path: Sensor - Controller - Actuator
- › Combines Safety-Related and Conventional Communication in One Medium
- › Fast Diagnosis through Complete Integration in the Automation Network
- › Simple Integration in Safety Products

## Functional Safety through the Air

Wireless Transmission

- › Compliance with Safety Requirements up to PL e, SIL 3
- › Flexible Integration of a Large Number of Safety Components
- › Easy to Extend, Reducing Conversion Times
- › Higher Productivity thanks to Optimized Safety Functions

## Increase Productivity and Efficiency

with PROFIsafe

- › Simple Human-Machine Interaction
- › Cost Reduction through Dynamic Adaptation of Safety-Related Functions
- › Uniform Configuration
- › Rapid Device Replacement for Maximum Availability
- › Network-Wide Diagnostics
- › PROFIsafe and PROFIenergy Complement Perfectly for Energy Efficiency and Availability